



Compact Inclinometer

Dual axis inclinometer with remote sensor

A small and compact inclinometer giving operators of machinery an accurate pitch and roll read out.

Ideally suited for smaller construction and farming machinery.

Powerful Performance

The Compact Inclinometer measures pitch and roll using a remote incline sensor. The use of a remote sensor allows the display to be positioned at an optional angle for operator visibility whilst allowing for accurate angle measurement.

Warning and alarm levels are user configurable through the password protected menu. When a warning level is exceeded, the critical reading will be highlighted yellow and an optional internal audible alarm will begin to beep. When an alarm level is exceeded, the critical reading will be highlighted red and the alarm will sound continuously.



The sensor can be calibrated to remove errors due to small offsets in mounting and can be damped to optimise accuracy in high vibration environments. An optional RF sensor is available on request.

The unit is multi voltage and can work in 12V and 24V vehicles.



Installation is simple with the only external wiring required being power and ground. The external sensor plugs into the loom provided. The sensor wiring can be extended if required.

The inclinometer display is supplied with a RAM mounting system which allows the display to be orientated optimally for the operator. Optional windscreen mounting kits are available on request.

The sensor should be ideally be mounted horizontally with the mounting tabs down and the wires exiting to the rear of the vehicle. For best results, mount the sensor as close to the centre of the vehicle as possible

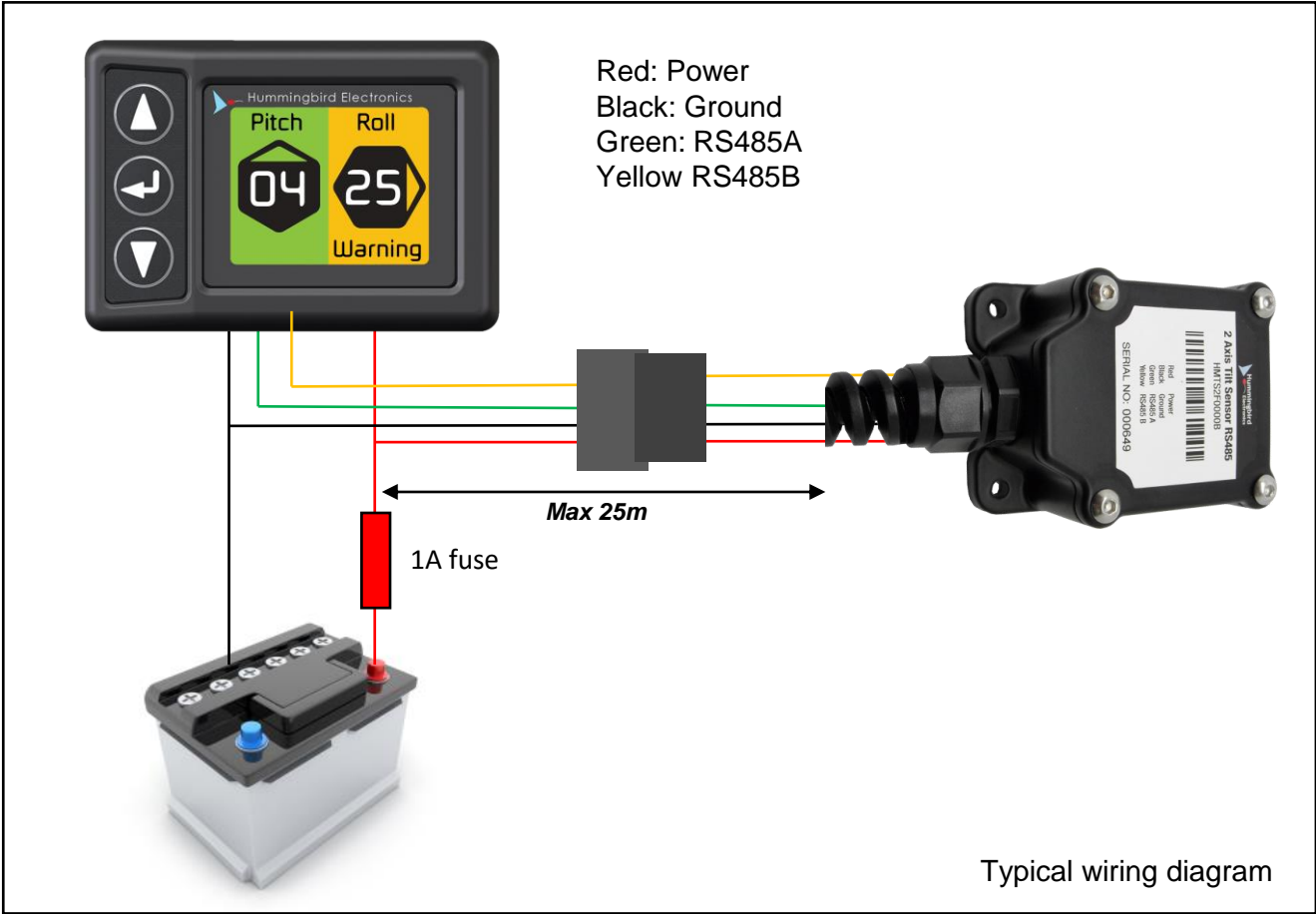
Features

- Pitch and Roll measurement
- Configurable warning and alarm levels
- Full colour display
- Remote incline sensor
- Sensor sdamping configurable
- Optional RF sensor
- Internal buzzer
- Password protected menu
- Rugged RAM mounting syste,
- Multi Voltage



Compact Inclinometer

Dual axis inclinometer with remote sensor



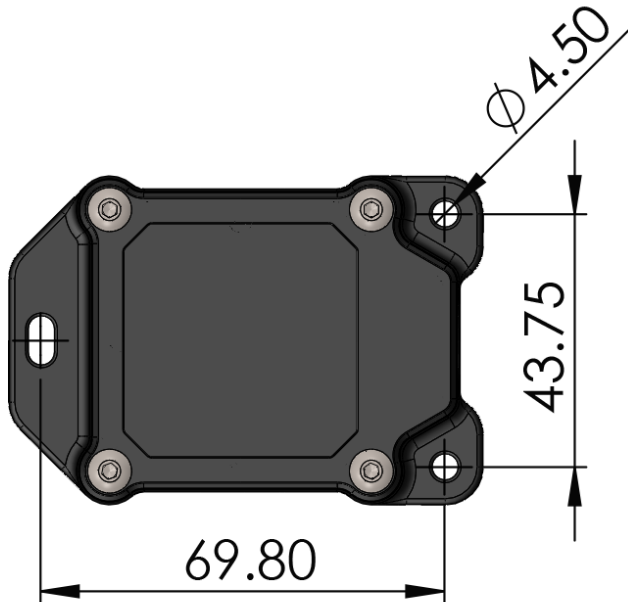
Technical Specifications and Ordering Information

Part Number (lincluding remotre sensor)	HMDS0500
Part Number (lincluding RF sensor)	HMDS0500RF
Part Number (spare remotre sensor)	HMTS2M0000B
Part Number (spare RF sensor)	HMTS2M0000BRF
Mounting system	0.5" RAM mount with diamond base
Input Voltage	9-36V
Power consumption	Less than 1W
Dimensions (Display)	70mm (width) x 50mm (height) x 18mm (depth)
Dimensions (Sensor)	82mm (length) x 58mm (width) x 36mm (height)
Sensor cable length	7m
Sensor resolution	1 degree
Operating temperature	-40 to 85 degrees

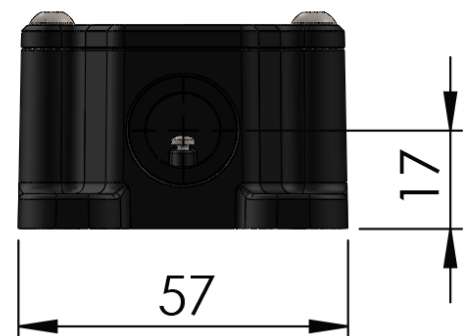
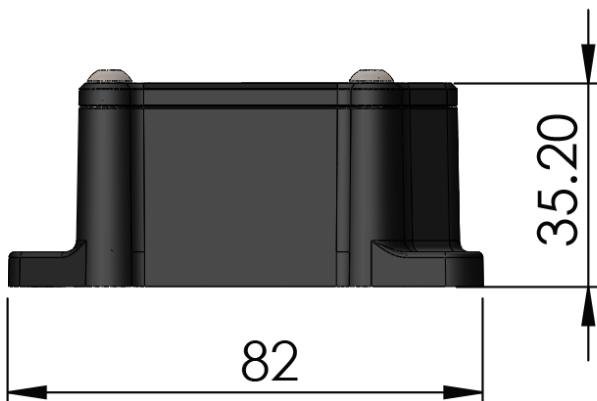


Compact Inclinometer

Dual axis inclinometer with remote sensor



Mounting holes
suit M4 screws.



Sensor dimensions



Compact Inclinometer

Dual axis inclinometer with remote sensor

Configuration

The Compact Inclinometer can be configured using the three buttons on the keypad.



Up - press up to go to the previous battery when on the main screen or to increment a value when in configuration screens

Enter - press enter to access the configuration menu.

Down - press down to go to the next battery when on main screen or to decrement a value when in the configuration screens

Configuration menu

Once the configuration menu has been accessed by pressing the **enter** button, a list of menu items will be shown. Press **down** to access the next menu option or **up** to access the previous one. Press **enter** to select an option. To exit the menu, select the exit icon and press **enter**.

Alert Thresholds

Select "Alert Thresholds" to access the Alert sub-menu.

Show

Select "Show", and use the **up** and **down** keys, to select whether the Compact Inclinometer displays pitch, roll, or both.

Units

Select "Units", and use the **up** and **down** keys, to select whether the Compact Inclinometer displays angles in degrees or gradient.

Brightness

Select "Brightness", and use the **up** and **down** keys, to control the brightness of the Compact Inclinometer's display.

Sensor Speed

Select "Sensor Speed", and use the **up** and **down** keys, to control the response speed of the Tilt Sensor. A lower speed will cause the reported angle to change more slowly, but be more resistant to sudden jolts.

Calibrate

Select "Calibrate" to access the Calibration sub-menu.

Buzzer

Select "Buzzer", and use the **up** and **down** keys, to enable or disable the internal buzzer.

Latch

Select "Latch", and use the **up** and **down** keys, to enable or disable the latch feature. When enabled, the Compact Inclinometer will remain in an Alarm or Warning state for 10 seconds after the device returns to a safe angle.

Password

Select "Password", and use the **up** and **down** keys, to enable or disable the password. If the password is enabled, you will be prompted to enter the desired password.

Entering a new Password

Change the number using the **up** and **down** keys, and press **enter** to confirm each number, one at a time. **BE CAREFUL WHEN SETTING A NEW PASSWORD – YOU WILL NOT BE ABLE TO ACCESS THE MENU WITHOUT IT.**

Back

Select "Back" to return to the main display.

Alert Thresholds Menu

The Alert Thresholds menu contains warning and alarm threshold levels for each of the four tilt axes – Left, Right, Forwards and Backwards. Use the **up** and **down** keys to navigate through the menu, the **enter** key to select one of the threshold levels, the **up** and **down** keys to set the angle and **enter** to confirm the new setting.

Calibration Menu

Set Calibration

Select "Set Calibration" to set the current pitch and roll to 0.

Reset Calibration

Select "Reset Calibration" to clear the previous calibration.

Back

Select "Back" to return to the configuration menu.